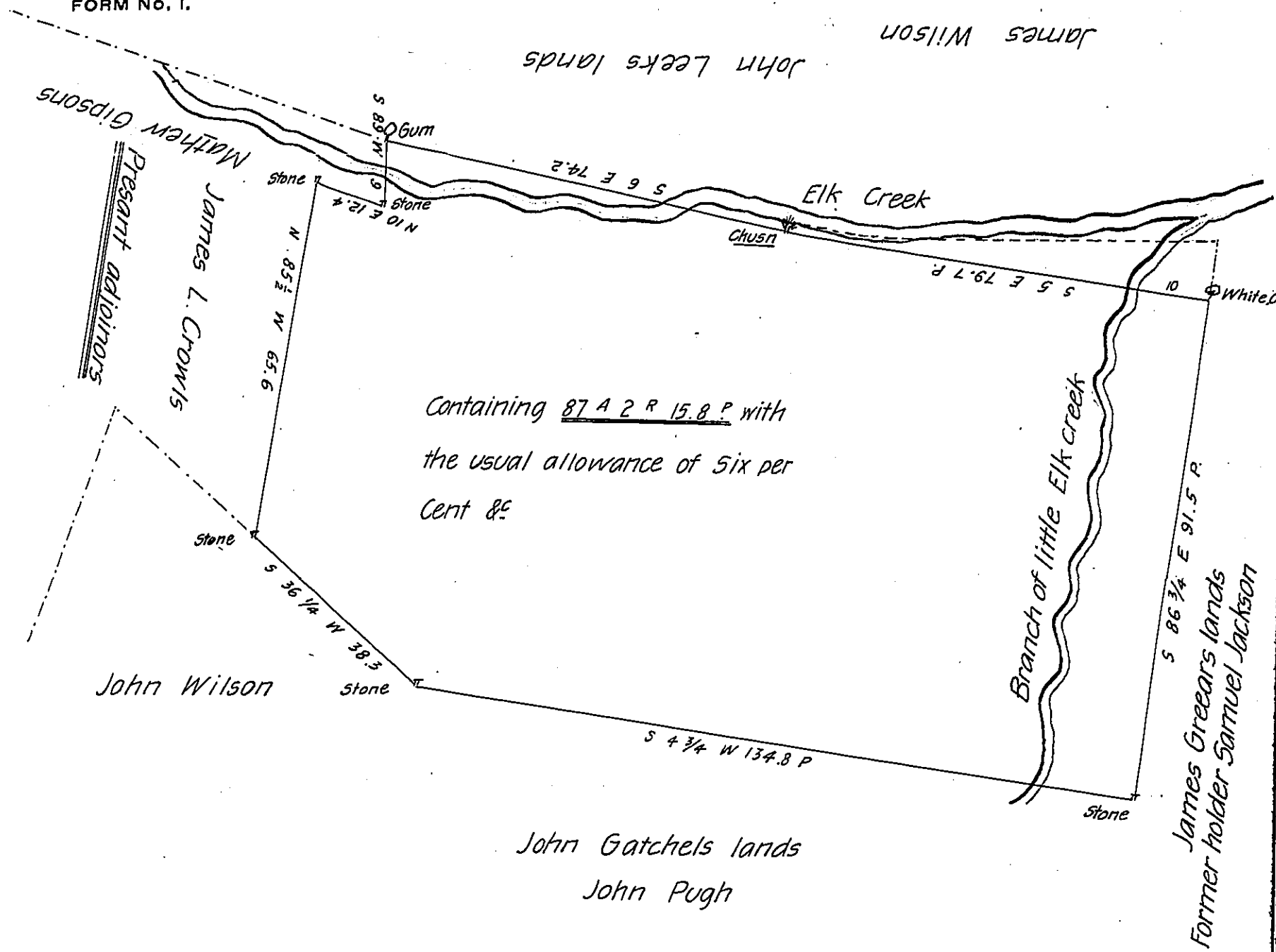


FORM NO. 1.



The above draught describes a Tract of Land now the Proppe of James Crowl containing 87 A 2 R 15.8 P of Land with the usual allowance of six per cent situate in East Nottingham Township Chester County Being a part of a Tract of Land Containing 250 Acres granted by warrant bearing date the 26th day of November A.D. 1737 to Robert Miller of said County of Chester the described land has been improved for upwards of sixty years past Surveyed by me the 4th day of January A.D. 1842

William Fitzgerald D.S.

IN TESTIMONY that the above is a copy of the original remaining on file in the Department of Internal Affairs of Pennsylvania, made conformably to an Act of Assembly approved the 16th day of February, 1833, I have hereunto set my Hand and caused the Seal of said Department to be affixed at Harrisburg, this first day of May 1906

Loac P. Brown
Secretary of Internal Affairs.